

Forus

Reliability
Meets Simplicity



See through Blindness



45 million people
in the world are classified blind



80% of all **blindness**
cases are avoidable



Common Eye Problems

Diabetic Retinopathy

Progressive damage to the retina, the light-sensitive lining of the eye

Age-related Macular Degeneration (AMD):

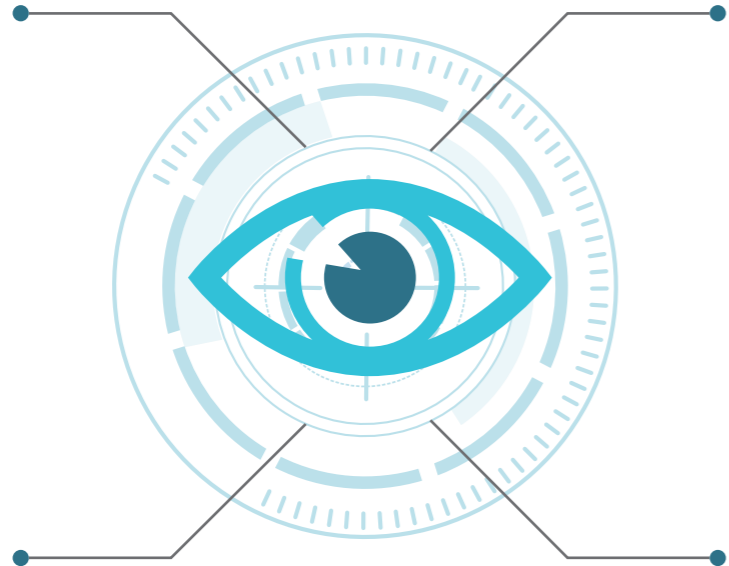
Deterioration or breakdown of the eye's macula, which occurs at age 50 and above

Glaucoma

Damage to the optic nerve due to excessive fluid pressure within the eye

Cataract

Clouding of eye lens, preventing clear vision

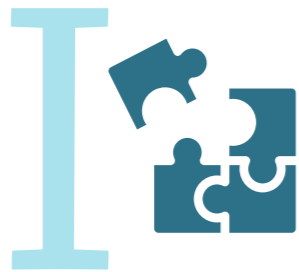


Innovate. Implement. Impact.



Innovate

A compact, rugged and portable ophthalmic imaging device at an affordable cost



Implement

Key system innovations allowing for effective deployment of the technology to reach the masses



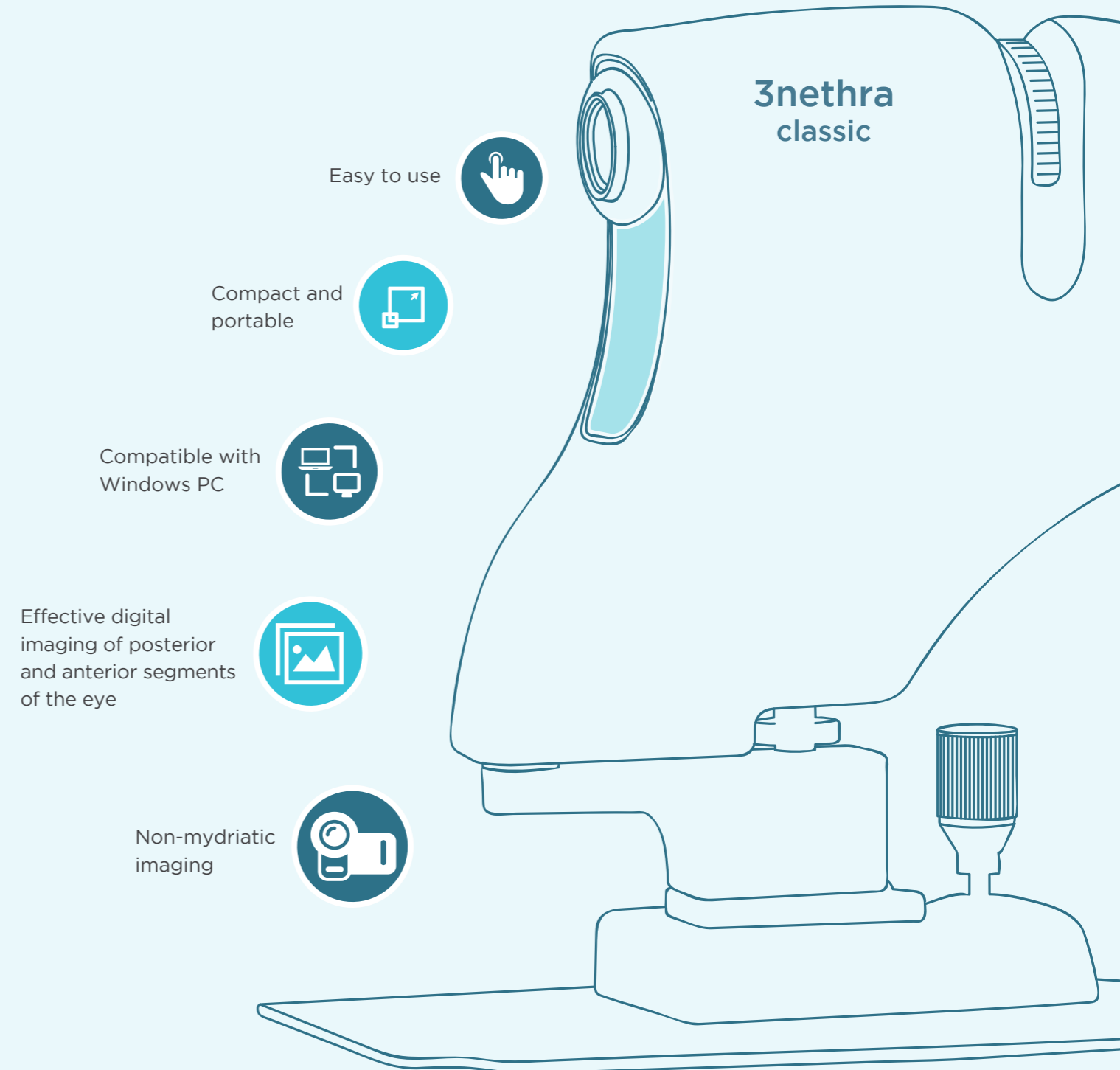
Impact

Forus has successfully touched lives of millions and redefined ophthalmic care. Its main goal is to end preventable blindness

3nethra classic An Ophthalmic Imaging Device

The 3nethra classic is a compact, portable, and easy-to-use non-mydratric digital imaging device. It is designed to acquire, display, store, and transmit images of the posterior and anterior surfaces of the human eye.

Intended Use: The 3nethra is a non-mydratric device for imaging the posterior and anterior surfaces of the human eye. It assists clinicians in the evaluation, diagnosis, and documentation of visual health.



Features



Posterior / Anterior Segment Imaging

- Non-mydratiatic retina images with 40 degrees FOV
- Peripheral imaging using external fixation
- Surface imaging of anterior segment
- Low Power LED light source for image capture
- Focus guidance for optimal image capture



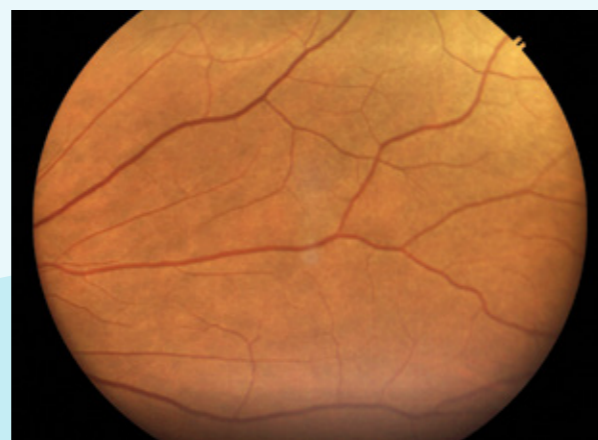
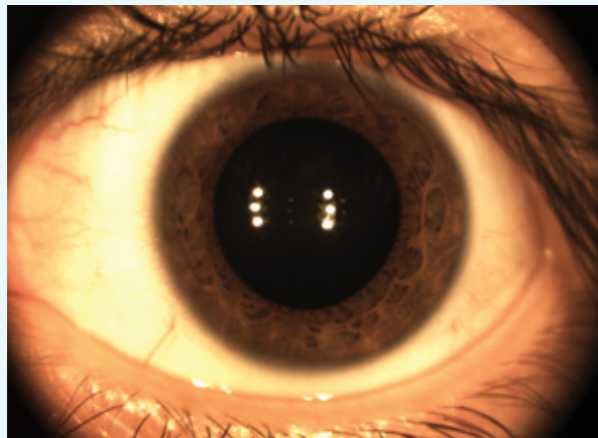
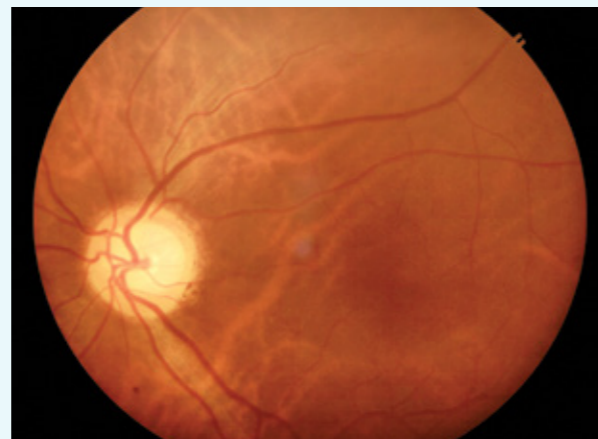
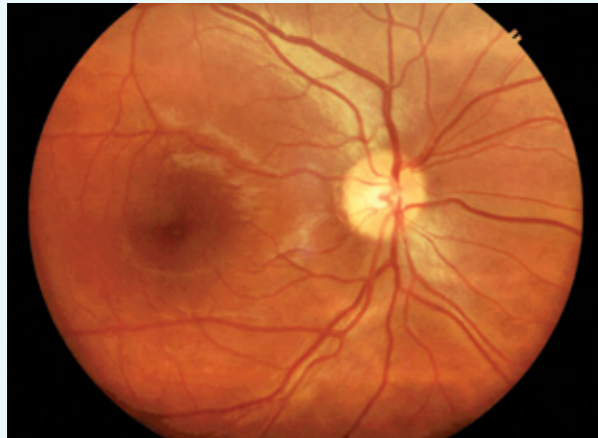
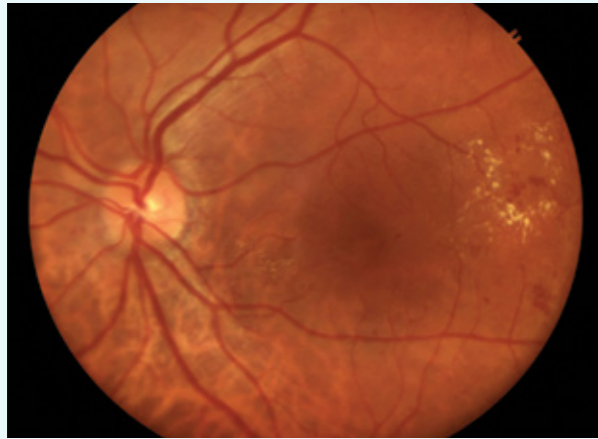
Report Generation

- Automatic and manual selection of images for report generation
- Customizable report templates
- Single click print configuration
- Handy tool for better patient consulting



Patient Record

- Unique medical record number
- Access to historical patient data
- Image storage and retrieval



Technical Specifications

| | |
|-----------------------------|--|
| Field of View | 40 degrees |
| Optical Resolution | 8-14 microns |
| Image Sensor | 3 mega pixels |
| Interface | Universal Serial Bus 2.0 |
| Dimensions | 340mm x 498mm x 620mm |
| Total Weight | 10 kgs |
| Power Consumption | 5-10 W |
| Power Supply | Input: AC 100-240V, 50/60 Hz Output: for DC power adaptor 5V/4A |
| Minimum System Requirements | MS Windows 8 (and above) min of 4 GB RAM, 2.2GHz CPU. (Forus recommends to use a CE marked laptop or desktop) |



Forus Health Pvt. Ltd.

#2234, 23rd Cross, Banashankari 2nd Stage,
Bangalore - 560 070, India.

Phone: +91 80 4162 4041 | 4162 4042

Fax: +91 80 4206 5393

Email: askus@forushealth.com

Web: www.forushealth.com

The logo for Forus Health Pvt. Ltd. features the word "Forus" in a bold, blue, sans-serif font. A small red dot is positioned above the letter 'o'.